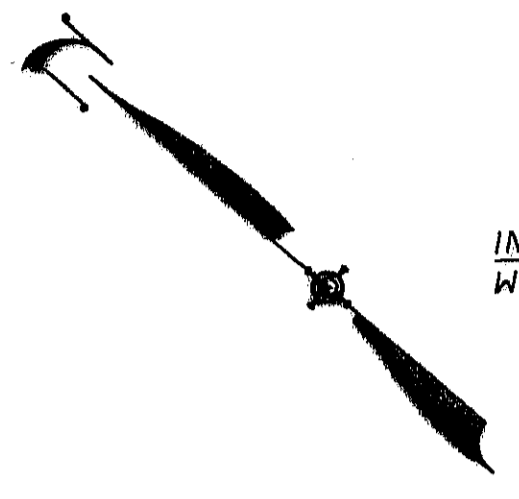
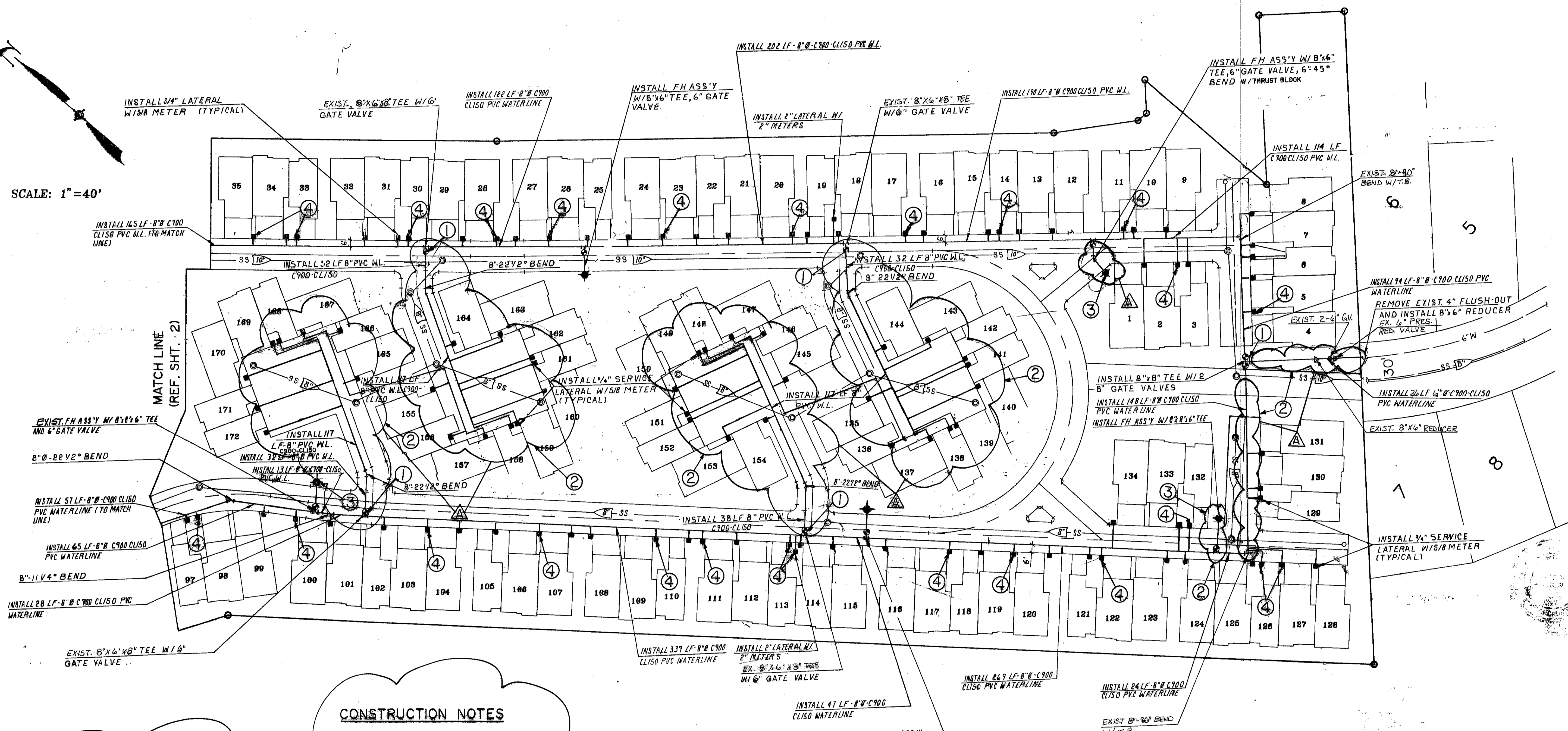


**WATER LEGEND**

- W- WATER LINE (SIZE SHOWN)
- ◆ FIRE HYDRANT ASSEMBLY W/GATE VALVE & TEE
- GATE VALVE
- WATER SERVICE LATERAL W/METER
- ◀ BLOW-OFF VALVE

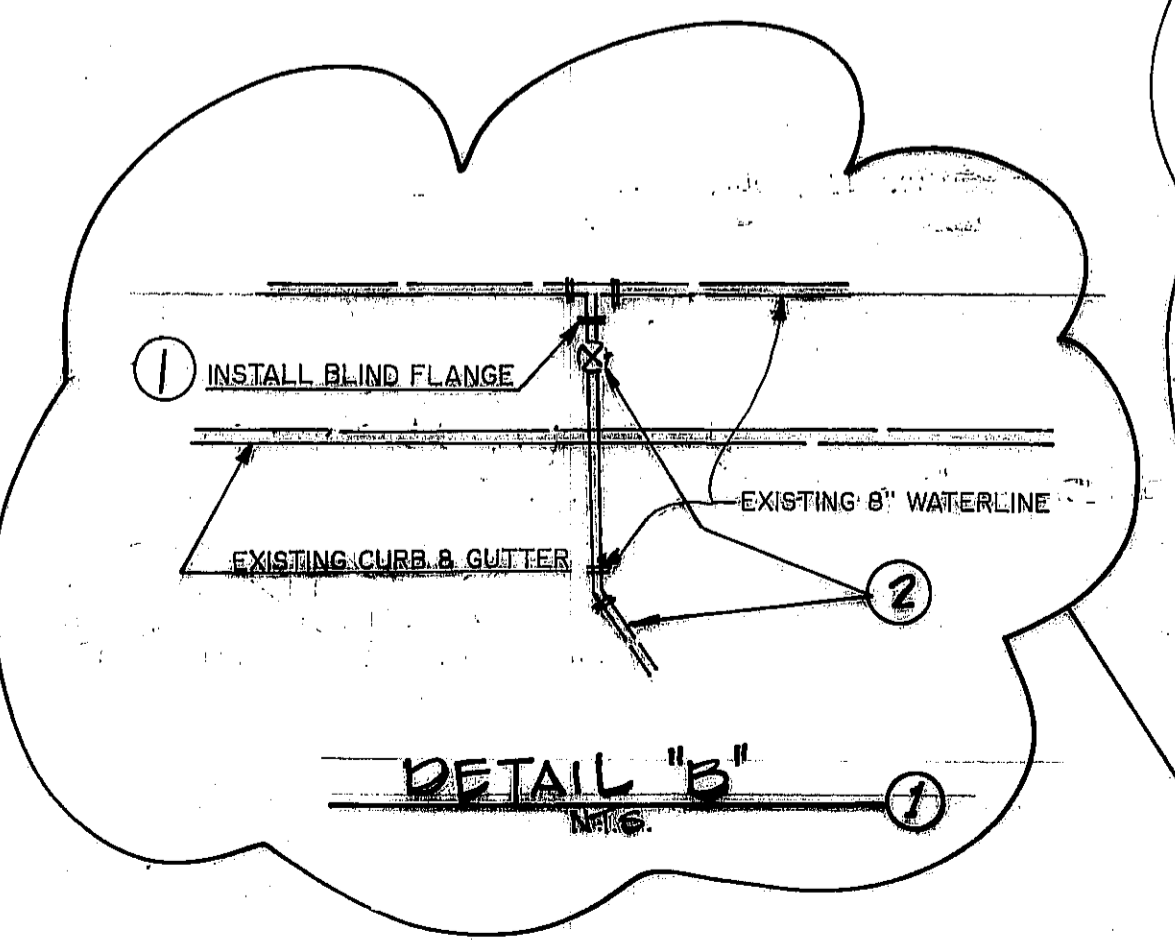


SCALE: 1"=40'



**CONSTRUCTION NOTES**

- ① INSTALL BLIND FLANGE PER DETAIL 'B' AS SHOWN HEREON.
- ② REMOVE ALL WATER IMPROVEMENTS INCLUDING 8" PVC WL, BENDS, B.O., LATERALS, METERS, & THRUST BLOCKS.
- ③ RELOCATE EXISTING FIRE HYDRANT AS SHOWN ON SHEETS 9 & 10 OF 15.
- ④ CLOSE CORP. STOP @ EXISTING WATER LATERAL. DETACH EXISTING LATERAL FROM WATER MAIN, LEAVE LATERAL IN PLACE.



NOTES:  
 1. PROVIDE THRUST BLOCKS TO ALL WATER LINE BENDS EXCEPT FOR 11-1/4" BENDS.  
 2. ALL WATER SERVICE LATERALS WILL BE 3/4" LINE WITH 5/8" METER SET UNLESS SHOWN OTHERWISE.

REGISTERED PROFESSIONAL ENGINEER  
 JAMES TERRENCE ANSPACH  
 No. 22648  
 CIVIL  
 STATE OF CALIFORNIA

REGISTERED PROFESSIONAL ENGINEER  
 TED R. LYON  
 No. 27137  
 Exp. 03-31-97  
 CIVIL  
 STATE OF CALIFORNIA

James Terrence Anspach  
 Exp. 12/31/97

**SUMMIT**  
 ENGINEERING CORPORATION  
 CONSULTING ENGINEERS AND SURVEYORS  
 110 EAST BAY AVENUE, SUITE 202, SAN ANTONIO, TEXAS 78204  
 PHONE (781) 481-1000

DESIGNED BY: A.S.M.  
 DRAWN BY: K.K.A.  
 CHECKED BY: J.T.A.  
 DATE: SEPTEMBER 1994

EXISTING WATER PLAN-(REMOVAL)  
 PORTOBELLO  
 KAHALA DEVELOPMENT

REV.	DATE	DESCRIPTION
1	9/29/94	REMOVED EXISTING FACILITIES

BY APP'D: A.S.M.  
 SCALE: HORIZ. 1"=40'  
 VERT. 1"=10'  
 SHEET 12 OF 15

DR.9 K-2