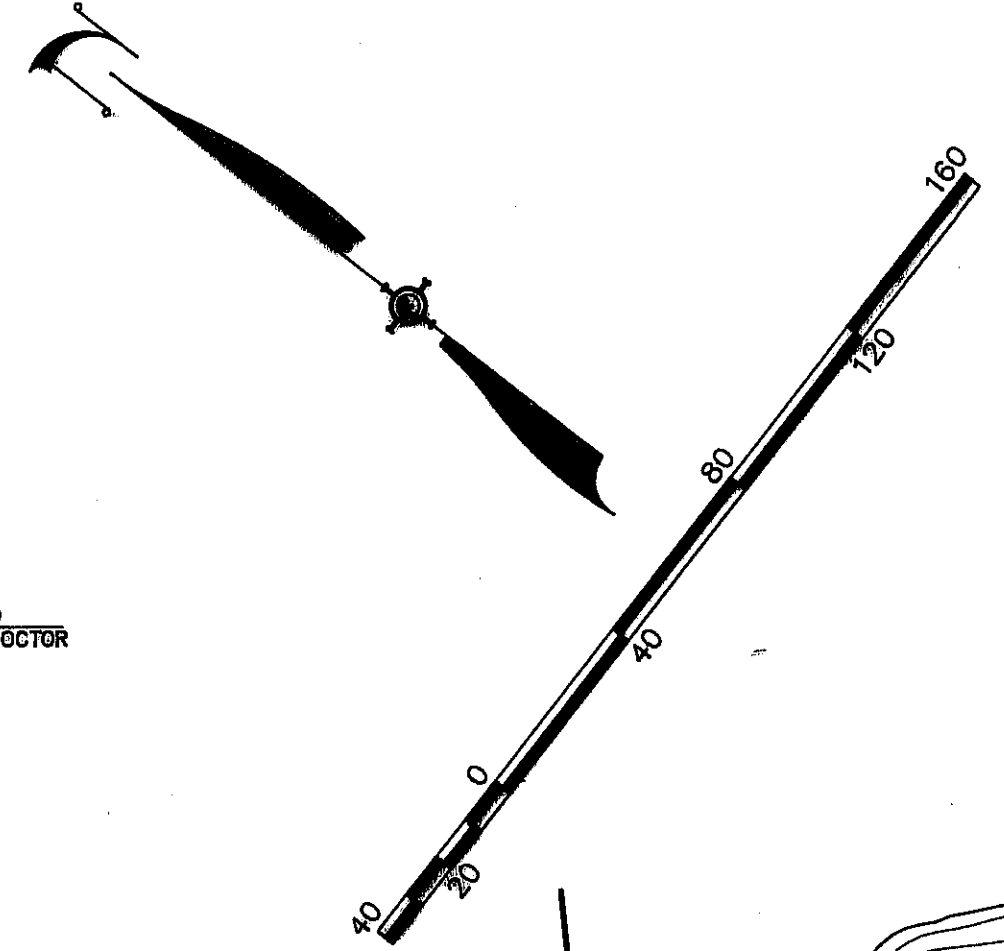
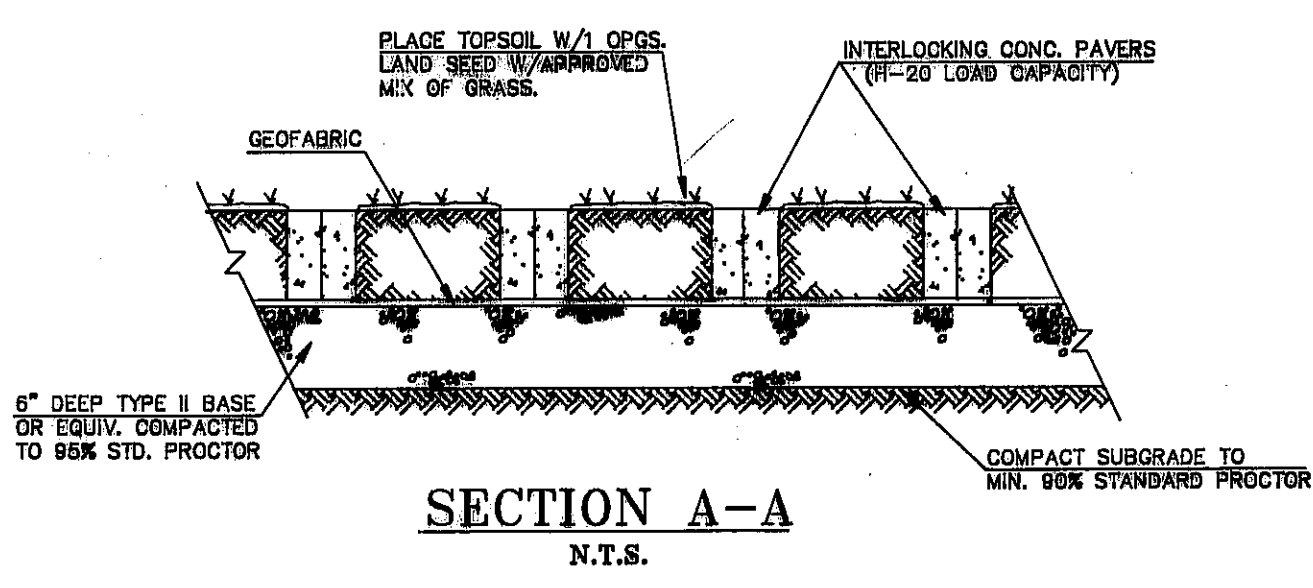
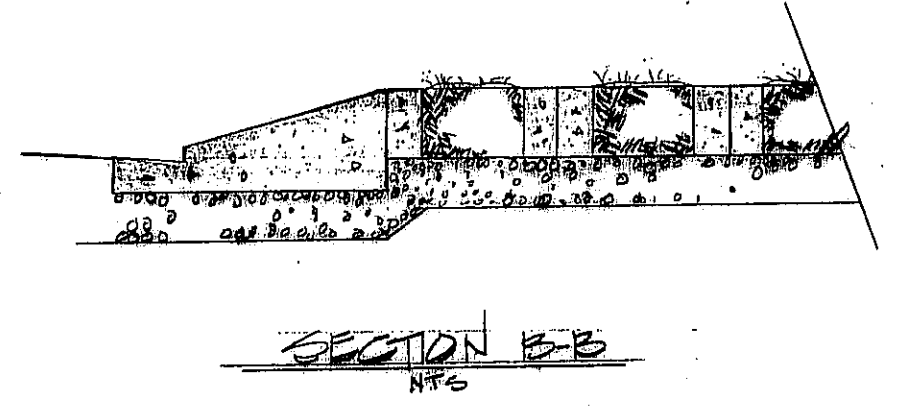
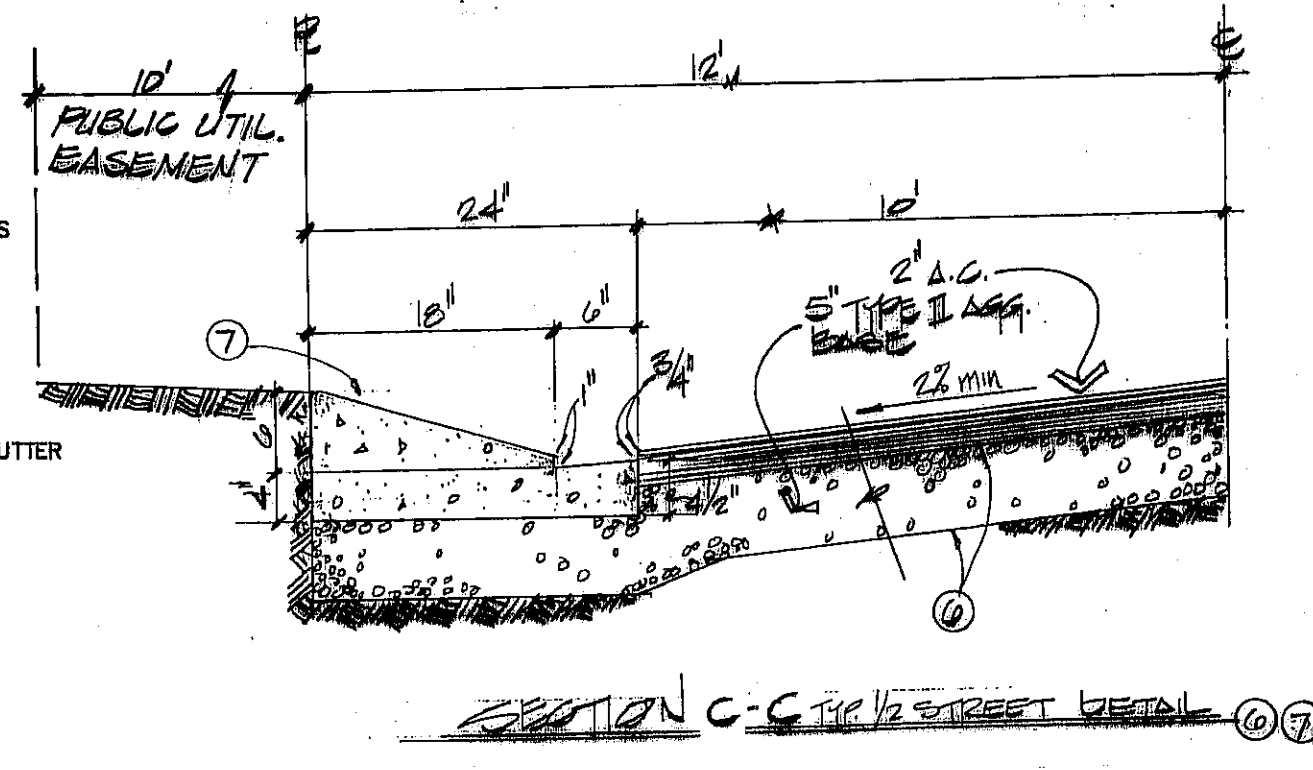
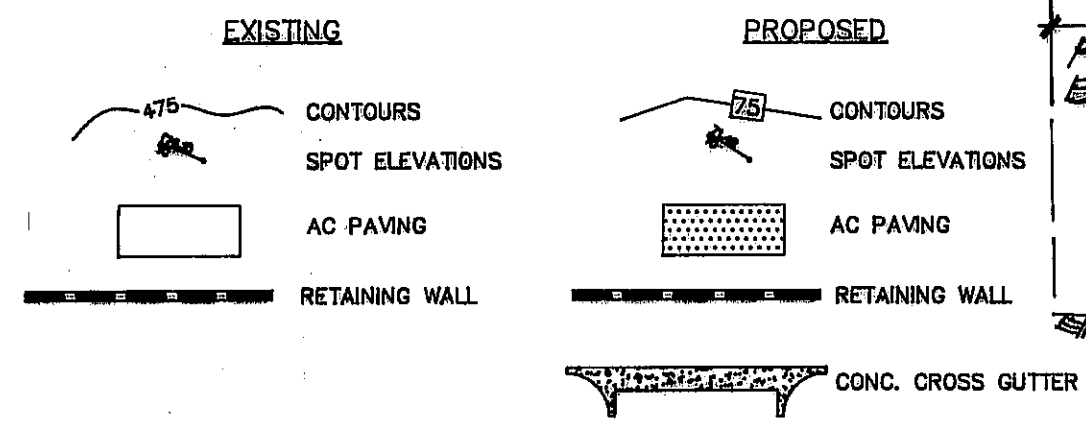


**LEGEND**



**BASIS OF BEARINGS**

N 00°14'30" W, BEING THE WEST LINE OF THE E 1/2 OF THE SE 1/4 OF SECTION 29, T8N, R23E, S.B.M., AS SHOWN ON RECORD OF SURVEY BOOK 26, PAGE 64 O.R. OF SAN BERNARDINO COUNTY AND ON TRACT MAP NO. 8886.

**PROJECT BENCHMARK**

U.S. DEPARTMENT OF COMMERCE, COAST AND GEODETIC SURVEY, VERTICAL CONTROL DESIGN V 161 AS FOLLOWS:  
 0.9 MILE SOUTHEAST ALONG THE ATCHISON, TOPEKA & SANTA FE RAILWAY FROM THE STATION AT NEEDLES, BERNARDINO COUNTY, 24 FEET NORTHEAST OF THE EAST BANK OF A SLOUGH, ABOUT 340 FEET SOUTHEAST OF A ROAD CROSSING IN THE CENTER OF THE TOP OF A 10-BY-12 FOOT SIGNAL BLOCK FOUNDATION, AND 8.7 FEET SOUTHWEST OF THE SOUTHWEST RAIL. A STANDARD DISK, STAMPED "477.624 V 161 1933."

**CONSTRUCTION NOTES**

1. REMOVE EXISTING CURB & GUTTER, CONSTRUCT 4" WIDE VALLEY GUTTER
2. CONSTRUCT 6" CURB & GUTTER TYPE A-2.
3. CONSTRUCT LOW FLOW CHANNEL OUTLET PER DETAIL 'A' SHEET 15 OF 15.
4. CONSTRUCT A.C. PAVING - SECTION A-A SHEET 7 OF 15.
5. CONSTRUCT 2" WIDE CONCRETE VALLEY GUTTER.
6. CONSTRUCT A.C. PAVING C/W BASE PER SECTION C-C, AS SHOWN HEREON.
7. CONSTRUCT CURB PER DETAIL ON SECTION C-C, AS SHOWN HEREON.
8. CONSTRUCT INTERLOCKING PAVERS PER SECT. A-A HEREON.
9. CONSTRUCT 18" RCP STORM DRAIN.
10. CONSTRUCT 18" CONCRETE COLLAR TIE TO EXIST. STORM DRAIN.
11. INSTALL PRECAST CONCRETE STORM MANHOLE (TYPE 200-0)

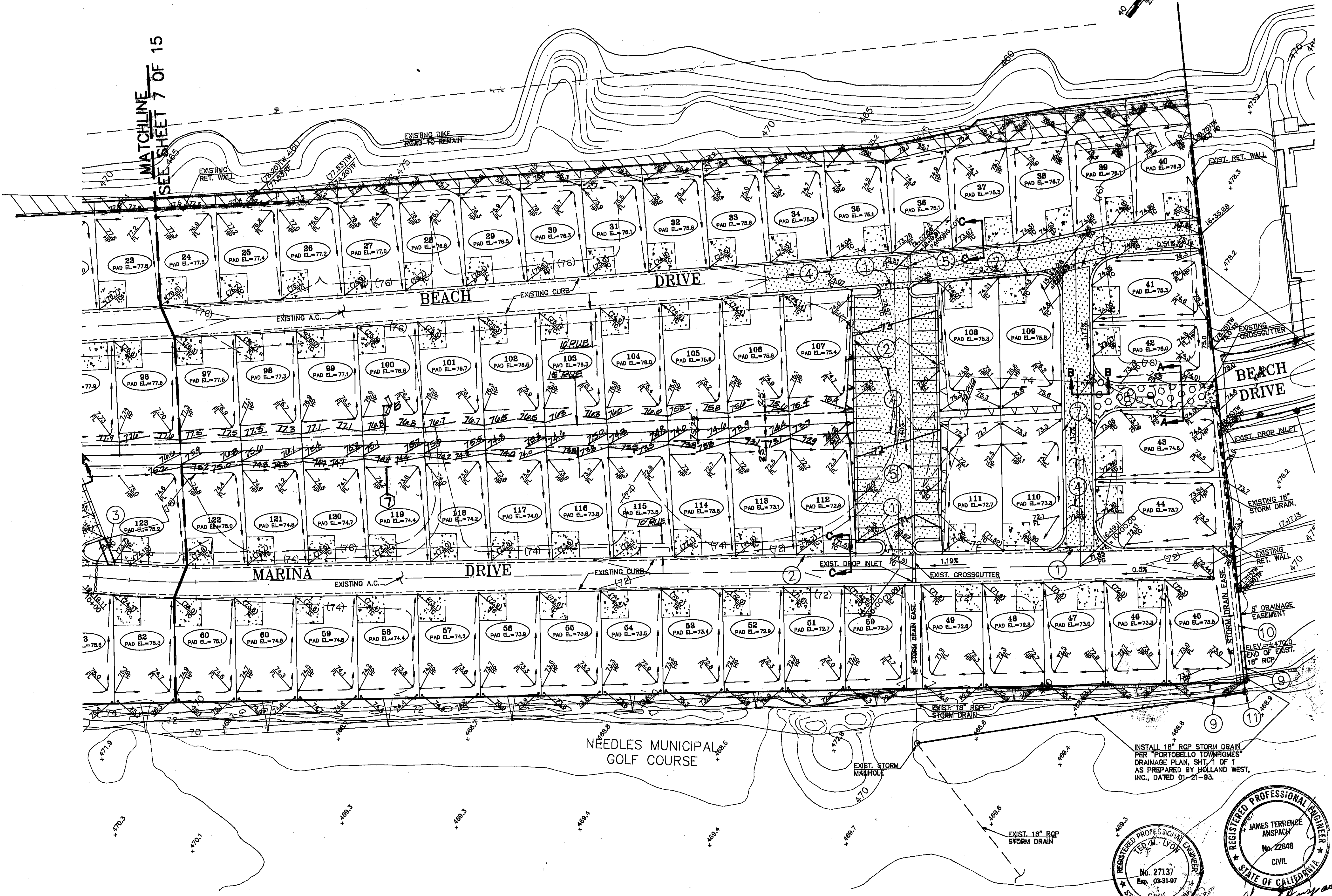
**NOTE:**

DRIVEWAYS ARE SHOWN FOR LOCATION PURPOSES ONLY, AND ARE NOT TO BE CONSTRUCTED WITH THESE PLANS.

**UTILITY NOTE**

UTILITY LOCATIONS SHOWN HEREON ARE APPROXIMATE ONLY. IT SHALL BE THE CONTRACTOR'S RESPONSIBILITY TO DETERMINE THE EXACT HORIZONTAL AND VERTICAL LOCATION OF ALL EXISTING UNDERGROUND UTILITIES PRIOR TO COMMENCING CONSTRUCTION. NO REPRESENTATION IS MADE THAT ALL EXISTING UTILITIES ARE SHOWN HEREON. THE ENGINEER ASSUMES NO RESPONSIBILITY FOR UTILITIES NOT SHOWN OR UTILITIES NOT SHOWN IN THEIR PROPER LOCATION.

Avoid cutting underground utility lines. It's costly.  
 Call before you Dig  
 1-800-227-2600  
 UNDERGROUND SERVICE (USA)



REGISTERED PROFESSIONAL ENGINEER  
 JAMES TERRENCE ANSPACK  
 No. 27137  
 Exp. 09-31-97  
 CIVIL  
 STATE OF CALIFORNIA

REGISTERED PROFESSIONAL ENGINEER  
 JAMES TERRENCE ANSPACK  
 No. 22648  
 CIVIL  
 STATE OF CALIFORNIA

EXP 12-31-97

**SUMMIT**  
 ENGINEERING CORPORATION  
 CONSULTING ENGINEERS AND SURVEYORS  
 1001 SOUTH MEADOWS LANE, SUITE 1010  
 LAS VEGAS, NEVADA 89106  
 PHONE: (702) 242-2236 FAX: (702) 252-3477

DESIGNED BY: A.S.M.  
 DRAWN BY: K.R.A.  
 CHECKED BY: A.T.A.  
 AUGUST 5, 1994

IMPROVEMENT PLANS  
 KAHALA DEVELOPMENT  
 GRADING PLAN  
 SAN BERNARDINO CALIFORNIA

REV.	DATE	DESCRIPTION	BY	APP'D.

SCALE  
 HORIZ. 1" = 40'  
 VERT. 1" = 4'

SHEET 15 OF 15

JOB NO. 70863.1  
 KAHALA DEVELOPMENT, INC. (VET. GRAD. 2)