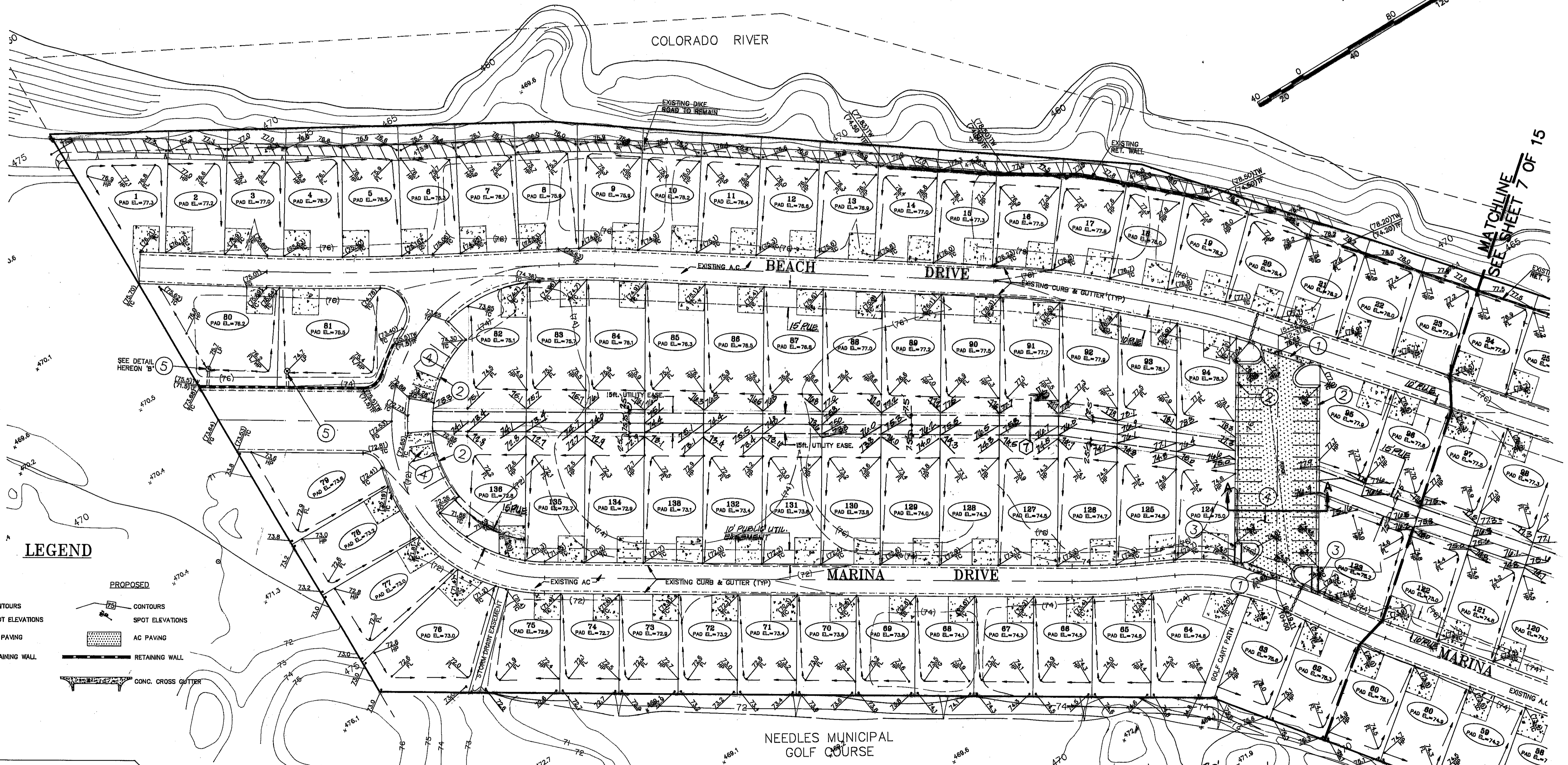
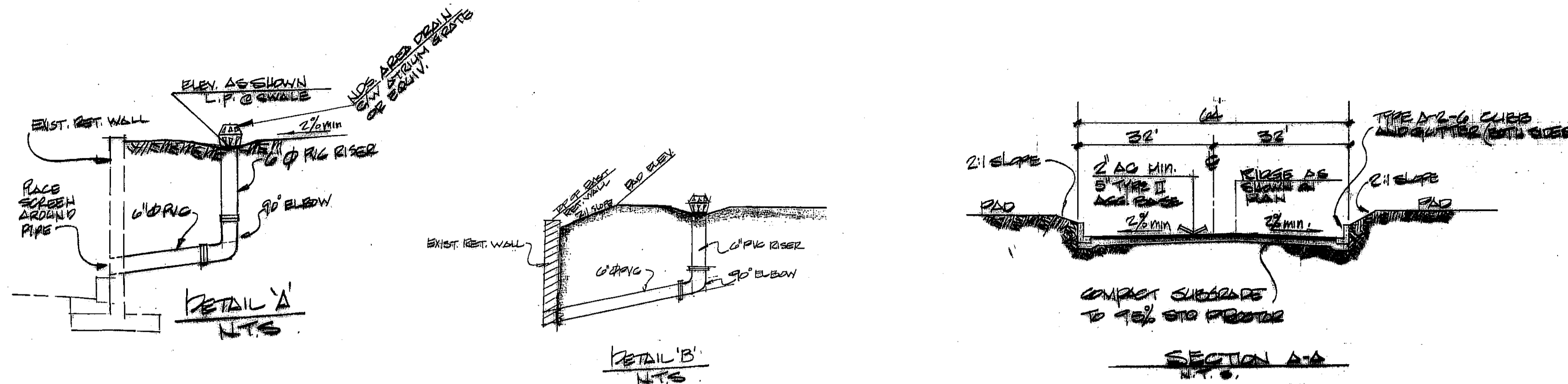


CONSTRUCTION NOTES

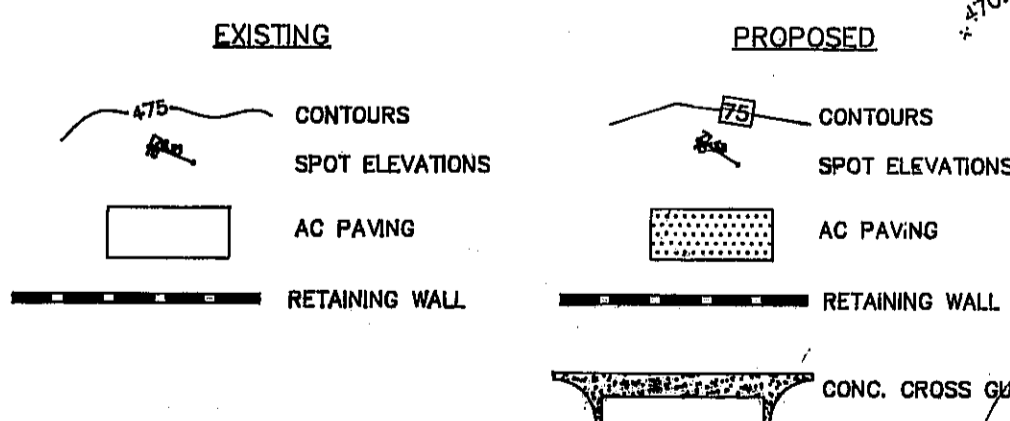
1. REMOVE EXISTING CURB & GUTTER, CONSTRUCT 4" WIDE VALLEY GUTTER
2. CONSTRUCT 6" CURB & GUTTER TYPE A-2.
3. CONSTRUCT LOW FLOW CHANNEL OUTLET PER DETAIL 'A' SHEET 15 OF 15.
4. CONSTRUCT A.C. PAVING PER SECT. A-A HEREON.
5. INSTALL AREA DRAIN PER DETAIL 'A' HEREON.

NOTE:

DRIVEWAYS ARE SHOWN FOR LOCATION PURPOSES ONLY, AND ARE NOT TO BE CONSTRUCTED WITH THESE PLANS.



LEGEND



UTILITY NOTE

UTILITY LOCATIONS SHOWN HEREON ARE APPROXIMATE ONLY. IT SHALL BE THE CONTRACTOR'S RESPONSIBILITY TO DETERMINE THE EXACT HORIZONTAL AND VERTICAL LOCATION OF ALL EXISTING UNDERGROUND UTILITIES PRIOR TO COMMENCING CONSTRUCTION. NO REPRESENTATION IS MADE THAT ALL EXISTING UTILITIES ARE SHOWN HEREON. THE ENGINEER ASSUMES NO RESPONSIBILITY FOR UTILITIES NOT SHOWN OR UTILITIES NOT SHOWN IN THEIR PROPER LOCATION.

Avoid cutting underground utility lines. Its costly.
 Call before you dig
 1-800-227-2600
 UNDERGROUND SERVICE (USA)

PROJECT BENCHMARK

U.S. DEPARTMENT OF COMMERCE, COAST AND GEODETIC SURVEY, VERTICAL CONTROL DESIGN V 161 AS FOLLOWS:

0.9 MILE SOUTHEAST ALONG THE ATCHISON, TOPEKA & SANTA FE RAILWAY FROM THE STATION AT NEEDLES, BERNADINO COUNTY, 24 FEET NORTHEAST OF THE EAST BANK OF A SLOUGH, ABOUT 340 FEET SOUTHEAST OF A ROAD CROSSING, IN THE CENTER OF THE TOP OF A 10-BY-12 FOOT SIGNAL BLOCK FOUNDATION, AND 8.7 FEET SOUTHWEST OF THE SOUTHWEST RAIL. A STANDARD DISK, STAMPED "477.624 V 161 1933."

BASIS OF BEARINGS

N 00°14'30" W, BEING THE WEST LINE OF THE E 1/2 OF THE SE 1/4 OF SECTION 29, T9N, R23E, S.B.M., AS SHOWN ON RECORD OF SURVEY BOOK 26, PAGE 64 O.R. OF SAN BERNARDINO COUNTY AND ON TRACT MAP NO. 8986.

SECTION B-A
 N.T.S.

REGISTERED PROFESSIONAL ENGINEER
 ED. H. LYON
 No. 27137
 Exp. 03-31-97
 CIVIL
 STATE OF CALIFORNIA

REGISTERED PROFESSIONAL ENGINEER
 JAMES TERRENCE ANSPACH
 No. 22648
 CIVIL
 STATE OF CALIFORNIA

James Terrence Anspach
 Exp. 12/31/97

SUMMIT
 ENGINEERING CORPORATION
 CONSULTING ENGINEERS AND SURVEYORS
 1000 W. 10th Street, Suite 100
 Los Angeles, CA 90015
 Phone: (213) 281-2222 Fax: (213) 281-2227

DESIGNED BY: A.S.M.
 DRAWN BY: K.K.A.
 CHECKED BY: J.T.A.
 AUGUST 5, 1994

IMPROVEMENT PLANS
 KAHALA DEVELOPMENT
 GRADING PLAN
 SAN BERNARDINO CALIFORNIA

REV.	DATE	DESCRIPTION	BY	APP'D

SCALE
 HORIZ. 1" = 40'
 VERT. 1" = 4'

SHEET 7 OF 15

JOB NO. 700693.1
 P. JAMES KAHALA MODEL/DWG (VIEW GRAD-1)