

# BASIS OF BEARINGS

N 00°14'30" W, BEING THE WEST LINE OF THE E 1/2 OF THE SE 1/4 OF SECTION 29, T9N, R23E, S.B.M., AS SHOWN ON RECORD OF SURVEY BOOK 26, PAGE 64 O.R. OF SAN BERNARDINO COUNTY AND ON TRACT MAP NO. 8986.

# PROJECT BENCHMARK

U.S. DEPARTMENT OF COMMERCE, COAST AND GEODETIC SURVEY, VERTICAL CONTROL DESIGN V 161 AS FOLLOWS:

0.9 MILE SOUTHEAST ALONG THE ATCHISON, TOPEKA & SANTA FE RAILWAY FROM THE STATION AT NEEDLES, BERNARDINO COUNTY, 24 FEET NORTHEAST OF THE EAST BANK OF A SLOUGH, ABOUT 340 FEET SOUTHEAST OF A ROAD CROSSING IN THE CENTER OF THE TOP OF A 10-BY-12 FOOT SIGNAL BLOCK FOUNDATION, AND 8.7 FEET SOUTHWEST OF THE SOUTHWEST RAIL. A STANDARD DISK, STAMPED "477.624 V 161 1933."

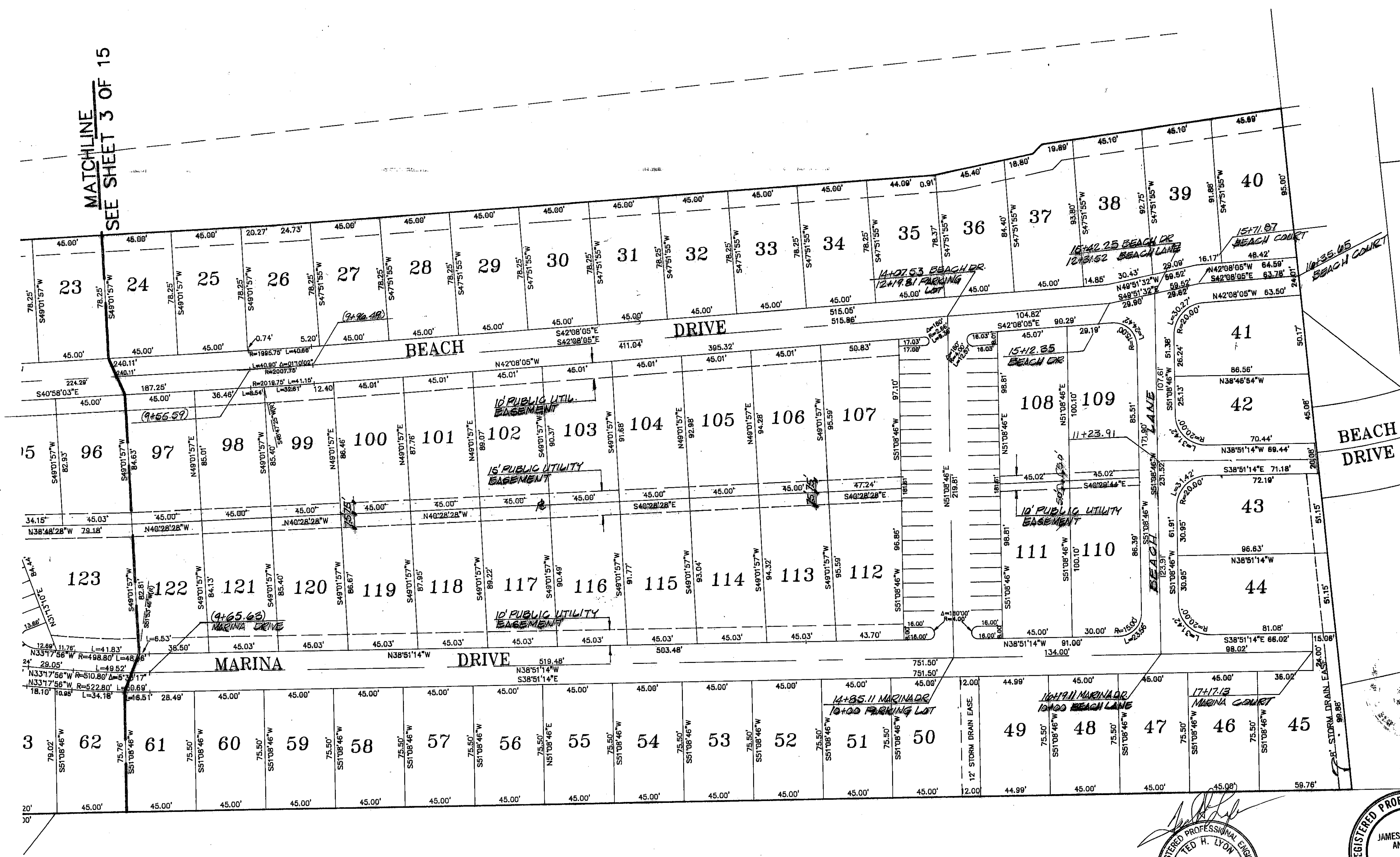
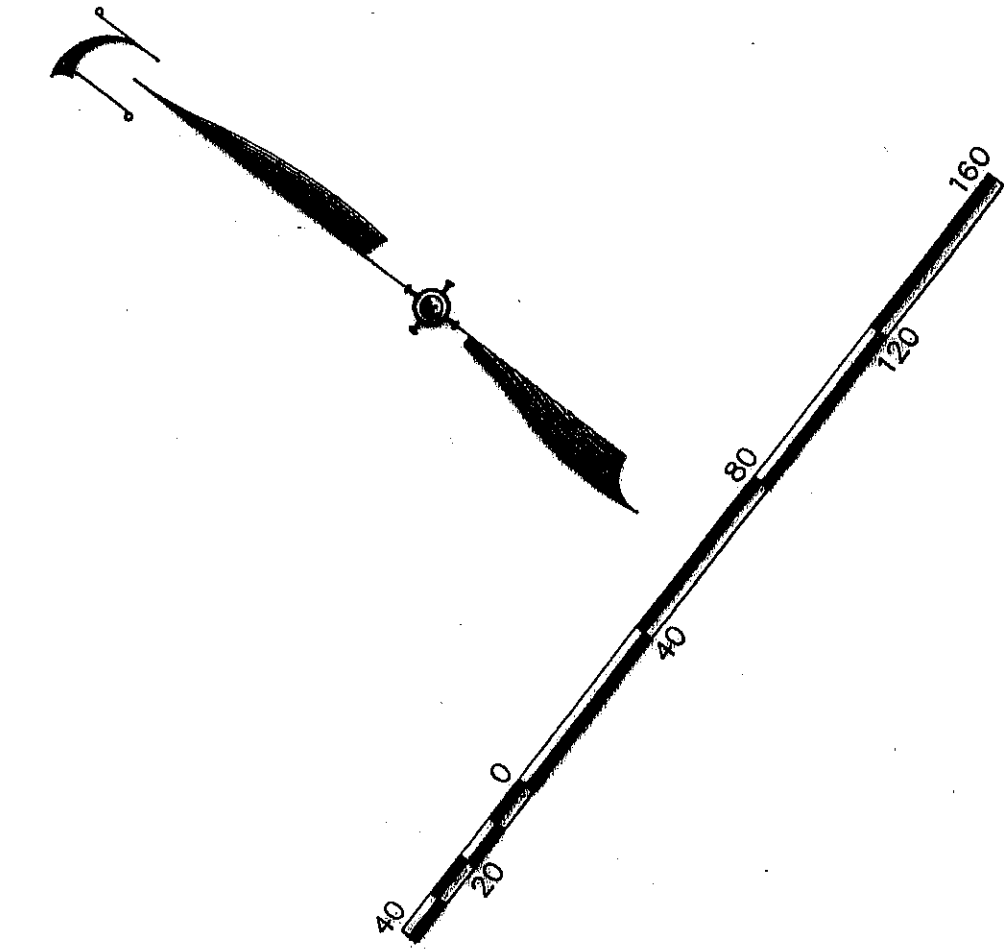
**SUMMIT**  
ENGINEERING CORPORATION  
CONSULTING ENGINEERS AND SURVEYORS  
3801 SOUTH HIGHWAY 148, PO BOX 1000, NEEDLES, CALIF. 92305  
PHONE: 702-732-3233 FAX: (702) 732-3234

DESIGNED BY: A.S.M.  
DRAWN BY: K.K.A.  
CHECKED BY: J.T.A.  
JULY 20, 1994

IMPROVEMENT PLANS  
KAHALA DEVELOPMENT  
SITE PLAN  
SAN BERNARDINO CALIFORNIA

REV.	DATE	DESCRIPTION	BY	APP'D

SHEET 4 OF 15  
JOB NO. 70863.1  
P. DWGS. KAHALA MODEL DWG (VIEW SITE-2)



**UTILITY NOTE**

UTILITY LOCATIONS SHOWN HEREON ARE APPROXIMATE ONLY. IT SHALL BE THE CONTRACTOR'S RESPONSIBILITY TO DETERMINE THE EXACT HORIZONTAL AND VERTICAL LOCATION OF ALL EXISTING UNDERGROUND UTILITIES PRIOR TO COMMENCING CONSTRUCTION. NO REPRESENTATION IS MADE THAT ALL EXISTING UTILITIES ARE SHOWN HEREON. THE ENGINEER ASSUMES NO RESPONSIBILITY FOR UTILITIES NOT SHOWN OR UTILITIES NOT SHOWN IN THEIR PROPER LOCATION.

Avoid cutting underground utility lines. It's costly.

Call before you Dig

1-800-227-2600  
UNDERGROUND SERVICE (USA)

