

257/92

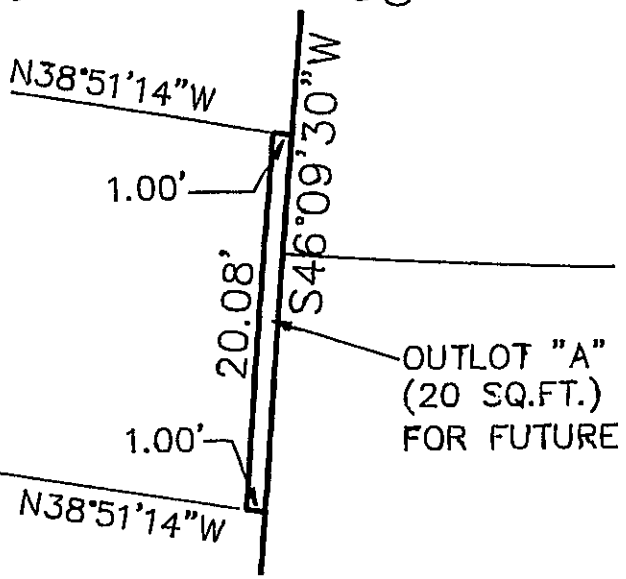
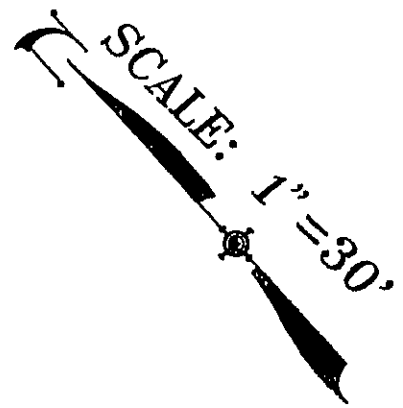
AUGUST 1994

TRACT NO. 15640

SHEET 7 OF 7

SUMMIT ENGINEERING
LAS VEGAS, NEVADA

BEING A RE-SUBDIVISION OF TRACT NO.14740 PER BK. 249, PG. 65 THRU 74 OF MAPS,
ALSO, BEING A SUBDIVISION OF A PORTION OF THE WEST 1/2 OF THE EAST 1/2
OF SECTION 29, TOWNSHIP 9 NORTH, RANGE 23 EAST, S.B.M.,
IN THE COUNTY OF SAN BERNARDINO, STATE OF CALIFORNIA.



LEGEND

- RADIAL BEARING (TYP.)
- -SET 1" (I.D.) IRON PIPE 18" LONG SET 1/4" BELOW SURFACE, W/SWING TIES
- -FOUND POINT AS NOTED
- 77 -LOT NUMBER
- 5,818 sf. -LOT AREA
- -TOTAL BOUNDARY LINE
- -LOT LINE
- -SET 1" (I.D.) IRON PIPE TAGGED L.S. 6506 UNLESS OTHERWISE DESCRIBED

LOT CORNERS: SET 1/2" IRON RODS 18" LONG TAGGED L.S. 6506. NAIL & TAG IN CURB ON PROLONGATED LOT LINES MAY BE SET IN LIEU OF 1/2" IRON RODS FOR FRONT LOT CORNERS.

257/92