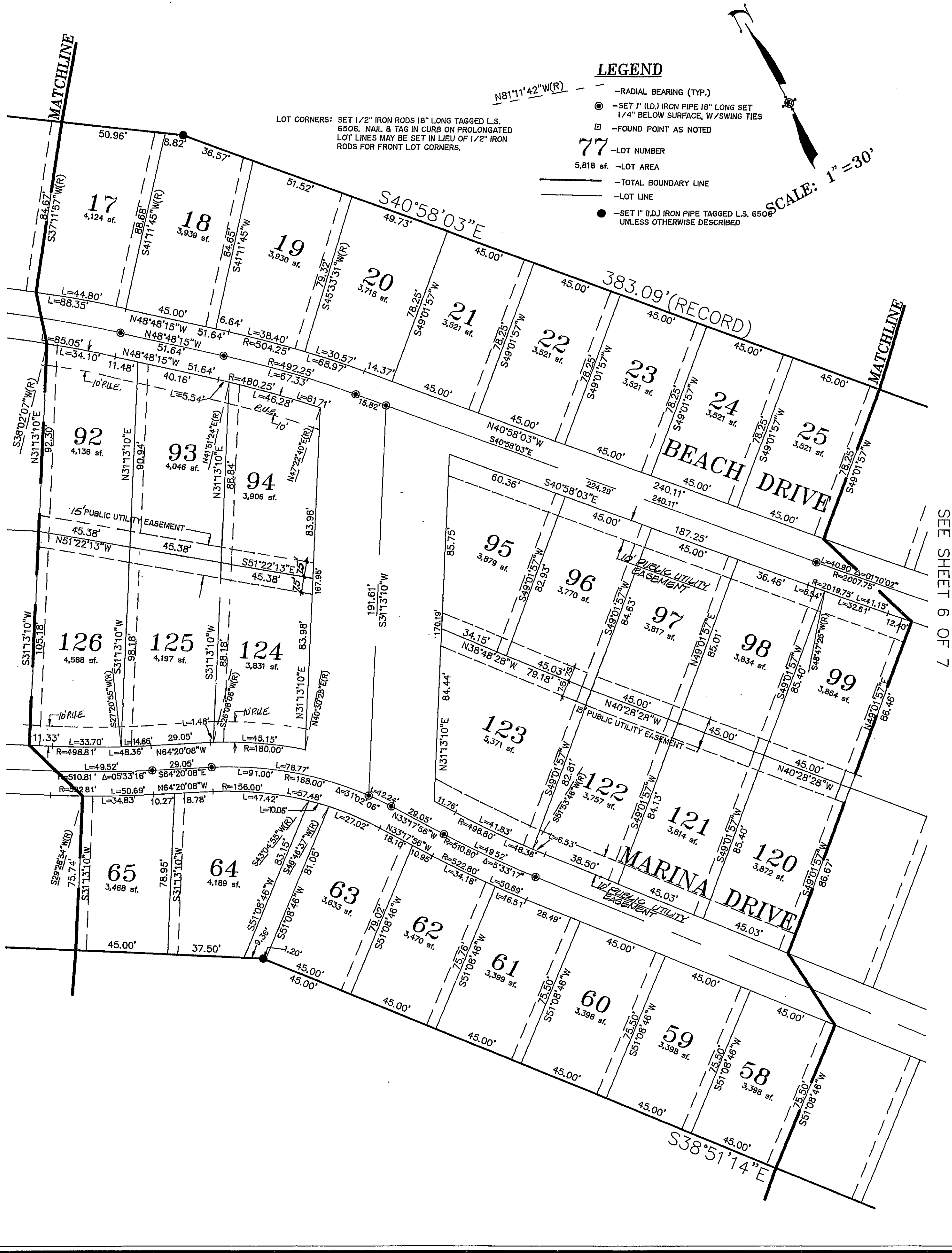


# TRACT NO. 15640

BEING A RE-SUBDIVISION OF TRACT NO. 14740 PER BK. 249, PG. 65 THRU 74 OF MAPS,  
ALSO, BEING A SUBDIVISION OF A PORTION OF THE WEST 1/2 OF THE EAST 1/2  
OF SECTION 29, TOWNSHIP 9 NORTH, RANGE 23 EAST, S.B.M.,  
IN THE COUNTY OF SAN BERNARDINO, STATE OF CALIFORNIA.



257/90

257/90