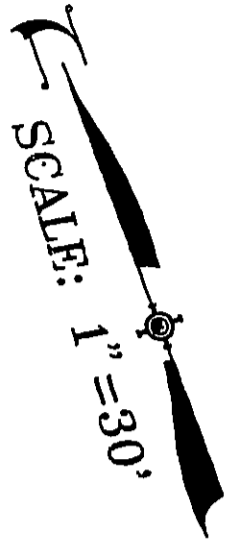


TRACT NO. 15640

257/89

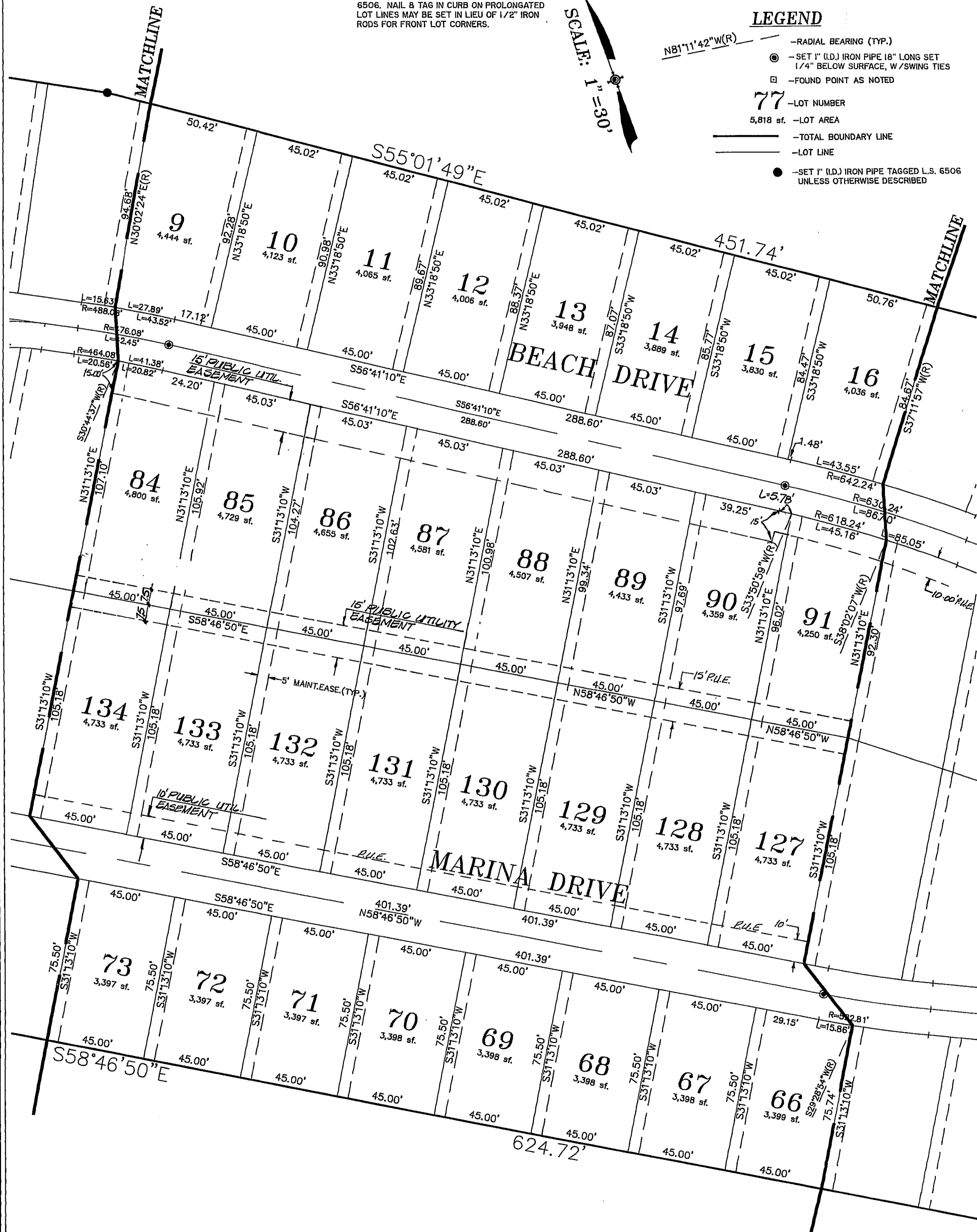
BEING A RE-SUBDIVISION OF TRACT NO.14740 PER BK. 249, PG. 65 THRU 74 OF MAPS,
ALSO, BEING A SUBDIVISION OF A PORTION OF THE WEST 1/2 OF THE EAST 1/2
OF SECTION 29, TOWNSHIP 9 NORTH, RANGE 23 EAST, S.B.M.,
IN THE COUNTY OF SAN BERNARDINO, STATE OF CALIFORNIA.

LOT CORNERS: SET 1/2" IRON RODS 18" LONG TAGGED L.S.
6506. NAIL B TAG IN CURB ON PROLONGATED
LOT LINES MAY BE SET IN LIEU OF 1/2" IRON
RODS FOR FRONT LOT CORNERS.



LEGEND

- N81°11'42"W(R) — RADIAL BEARING (TYP.)
- — SET 1" (I.D.) IRON PIPE 18" LONG SET 1/4" BELOW SURFACE, W/SWING TIES
- — FOUND POINT AS NOTED
- 77 — LOT NUMBER
- 5,818 sf. — LOT AREA
- — TOTAL BOUNDARY LINE
- — LOT LINE
- — SET 1" (I.D.) IRON PIPE TAGGED L.S. 6506 UNLESS OTHERWISE DESCRIBED



257/89